

# The Child Penalty: Evidence from Spain\*

Alicia de Quinto  
*Banco de España*

Laura Hospido  
*Banco de España and IZA*

Carlos Sanz  
*Banco de España*

June 2, 2021

## Abstract

Using data from social security records and an event study approach, we estimate the child penalty in Spain, looking at disparities for women and men across different labor outcomes following the birth of the first child. Our findings show that, the year after the first child is born, mothers' annual earnings drop by 11 percent while men's remain unchanged. The gender gap is even larger ten years after birth. Our estimate of the long-run child penalty in earnings equals 28 percent, similar to those found for Denmark, Finland, Sweden or the United States. In addition, we identify channels that may drive this phenomenon, including reductions in working days and shifts to part-time or fixed-term contracts. Finally, we provide evidence of heterogeneous responses in earnings and labor market participation by educational level: college-educated women react to motherhood more on the intensive margin (working part-time), while non-college-educated women are relatively more likely to do so in the extensive margin (working fewer days).

*JEL Codes:* I24, J13, J16, J21, J22, J31.

*Keywords:* gender, labor supply, employment, wages, fertility differentials, parenting, education.

---

\*We are grateful for useful comments to the Editor, three anonymous referees, Olympia Bover, and Ernesto Villanueva, as well as conference participants at 2021 RES conference, and the 2021 SEHO meeting. All errors remain our own. The opinions and analyses are the responsibility of the authors and, therefore, do not necessarily coincide with those of the Banco de España or the Eurosystem.

# 1 Introduction

The significant wage gap between male and female workers remains, to date, an undeniable reality in all countries. For instance, women’s median gross salary in Spain represented 78.6 percent of that of men’s in 2018.<sup>1</sup> The literature has discussed several explanations for this gap, including the role of human capital and career choices (Bertrand, 2011; Blau and Kahn, 2017; Buser et al., 2014; Olivetti and Petrongolo, 2016), gender-based discrimination (Goldin and Rouse, 2000), as well as the role of child-rearing responsibilities.

Related to the last explanation, a recent study by Kleven, Landais and Sogaard (2019) concludes that most of the gender wage gap is linked to the effects of maternity. In their analysis, they use Danish administrative data to perform an event study around the birth of the first child. Intuitively, this empirical approach compares how earnings evolve in the years before and after giving birth, while flexibly accounting for age, as well as year and month effects. They find evidence of a large and persistent impact of having children on various labor market outcomes.<sup>2</sup> Specifically, they find a female child penalty in earnings of 30 percent in the first year after the first childbirth, which converges to about 20 percent in the long run.<sup>3</sup> By contrast, men’s earnings do not change in the event of having children. Moreover, Kleven, Landais and Sogaard (2019) provide evidence that women’s labor force participation, hours of work, and wage rate fall after the first childbirth, while this is not the case for men. Lastly, they conduct a decomposition analysis and find a striking increase in the fraction of child-related gender inequality from 40 percent in 1980 to about 80 percent in 2013.

In this paper, we provide evidence from Spain using longitudinal data from Social Security records. Our contribution is twofold. First, we fill an existing gap in the literature by estimating the child penalty in Spain. Second, our dataset allows us to provide novel evidence regarding effects by contract characteristics. Specifically, we can test how parenthood affects men’s and women’s probability of working part-time (versus full-time) and in temporary (versus permanent) jobs.

---

<sup>1</sup>Instituto Nacional de Estadística (INE), Encuesta Anual de Estructura Salarial (2018).

<sup>2</sup>Before them, several studies aimed at quantifying the importance of motherhood for explaining the gender wage gap using different methodologies and obtaining similar results. Adda et al. (2017) develop a dynamic life-cycle model of the interaction between fertility, career and labor supply choices. Bertrand (2013) compares well-being measures among college-educated women with career and/or family, and measures the impact of motherhood on earnings. Fernández-Kranz et al. (2013) use Spanish Social Security records to investigate the underlying mechanisms that drive mothers’ lower earnings track, such as part-time work, accumulation of lower experience, or transitioning to lower-paying jobs. Angelov et al. (2016) use an alternative approach focusing on the within-couple earnings gap. They find that 15 years after the first child has been born, the male-female gender gaps in income and wages increase by 32 and 10 percentage points, respectively. Lundborg et al. (2017) introduce a strategy based on *in vitro* fertilization and find that fertility has negative, large, and long-term effects on earnings. See also recent work by Andresen and Nix (2019), Kleven, Landais and Sogaard (2019), and Pora and Wilner (2019) looking into the drivers of the penalty and potential reforms to address it.

<sup>3</sup>Following previous literature, throughout the document we refer to the short-run effect as the impact in the first year after the first childbirth, while the long-run effect refers to the impact 10 years after the first childbirth.

To estimate the effects of parenthood on women’s and men’s labor earnings we follow closely the approach proposed by Kleven, Landais and Sogaard (2019). We find that female and male employees follow a similar trend until the birth of their first child. However, at the time of the birth event, their earnings progression abruptly diverge. Our findings suggest that the short-run child penalty, defined as the amount by which women fall behind men due to motherhood in the first year, equals 11.4 percent. This phenomenon is amplified in the long run, with the child penalty widening to 28 percent after ten years. Our results point to a gender gap that is in line with that found for Denmark, although with higher persistence in the case of Spain.

Next, we provide some additional results to shed some light on the drivers of this gap. First, there are similar child penalties (10 percent in the short-run and 23 percent after 10 years) on the number of days worked—women reduce considerably their working days after their first childbirth, while men’s do not change. Second, women become more likely to work part-time right after having the first child, while that probability barely changes for men. Third, women’s likelihood of working on a fixed-term contract increases steadily over time while, again, men’s do not change. Fourth, we provide results by the educational level of parents, showing that (i) the drops in earnings and days of work are substantially larger for non-college-educated than for college-educated women, (ii) the increase in women’s part-time work, by contrast, is larger for college than for non-college women, and (iii) the increase in fixed-term works is larger for non-college-educated women. Overall, our analysis of the mechanisms highlights the presence of substantial heterogeneity by educational level, suggesting that college-educated women react to motherhood more on the intensive margin (working part-time), while non-college-educated women are relatively more likely to do so in the extensive margin (working fewer days).

Finally, we put our findings from Spain in relation to those from other countries. Kleven, Landais, Posch, Steinhauer, and Zweimller (2019) extend the Denmark analysis from Kleven, Landais and Sogaard (2019) to five additional countries: the United Kingdom, the United States, Germany, Austria, and Sweden. On the one hand, the study confirms the existence of child penalties for all these countries; on the other, it finds important differences in the magnitude of motherhood effects on earnings. Even though Sweden features similar long-run penalties to Denmark (26 percent), in the short-run the child penalty in Sweden exceeds 60 percent, twice the rate for Denmark. Both the US and the UK perform similarly, featuring penalties of almost 40 percent in the first year after childbirth that evolve to 31 and 44 percent after ten years. The most extreme cases are Austria and Germany, which feature short-run penalties of almost 80 percent and long-run penalties of 51 and 61 percent, respectively. Besides, Sieppi and Pehkonen (2019) complement the previous evidence by calculating the child penalty in Finland with similar results to those found for the other two Nordic countries: 61 percent in the short

run and 25 percent in the long run.<sup>4</sup> Our estimate of the long-run earnings child penalty is similar in magnitude to that found for Sweden and the US, and lower than that found in the UK, Austria, and Germany.<sup>5</sup>

The remainder of this paper is structured as follows. Section 2 provides an overview of the institutional framework, the data and the econometric specification of our analysis. Section 3 presents the results. Section 4 concludes. Supplementary information is available in the Appendix.

## 2 Institutional framework, data and empirical design

### 2.1 Institutional framework

In recent decades, the Spanish labor market has been characterized by the coexistence of fixed-term contracts with low firing costs and highly protected open-ended contracts, a rigid collective bargaining system and, above all, extraordinarily high fluctuations in the unemployment rate.<sup>6</sup> From a gender perspective, the unemployment rate has always been greater for women than for men: after 2008 the gap narrowed considerably until its virtual convergence in 2012, but then started widening again reaching more than 3 percentage points in 2018. Temporary employment is also more common among young workers and women. Furthermore, since the late 1970s, women's labor force participation in Spain has followed a persistent upward trend while men's labor force participation has declined (see Figure 1). As a result, the gender gap in labor force participation narrowed markedly from 49 to 11.5 percentage points between 1980 and 2018. This is true for most OECD economies, but Spain experienced one of the strongest convergence processes in this period because of its extremely low female labor participation rates in the 1970s.

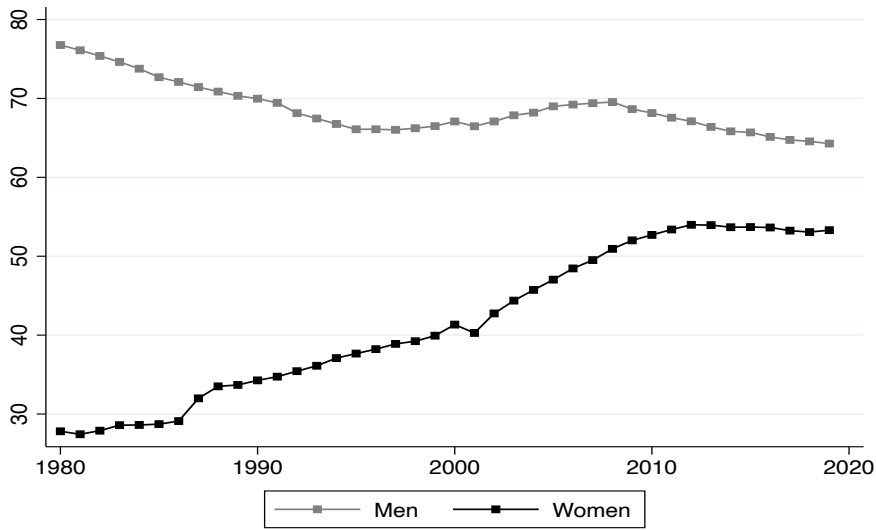
---

<sup>4</sup>Note that Kleven, Landais, Posch, Steinhauer, and Zweimüller (2019) and Sieppi and Pehkonen (2019) estimate the long-run effect as the average penalty five to ten years after the first childbirth. Berniell et al. (2020) estimate child penalties on the probability of working and other alternative modes of employment, such as part-time and self-employment, using retrospective data drawn from SHARE for 29 European countries.

<sup>5</sup>The literature on child penalties has focused on the European and American cases but remains sparse for developing countries with different institutional settings and cultural norms. Berniell et al. (2018) show that, after the first childbirth, women's gross earnings in Chile drop by 20 to 30 percent, and that this effect remains relatively stable in the long run. In a similar fashion, Querejeta (2020) studies the case of Uruguay and finds that formal employment falls by 30 percent in the short run; moreover, this penalty does not revert in the medium and long term, reaching 60 percent after ten years.

<sup>6</sup>Unless stated otherwise, the statistics quoted in this section are taken from the Spanish Labor Force Survey (Encuesta de Población Activa) compiled by the Instituto Nacional de Estadística.

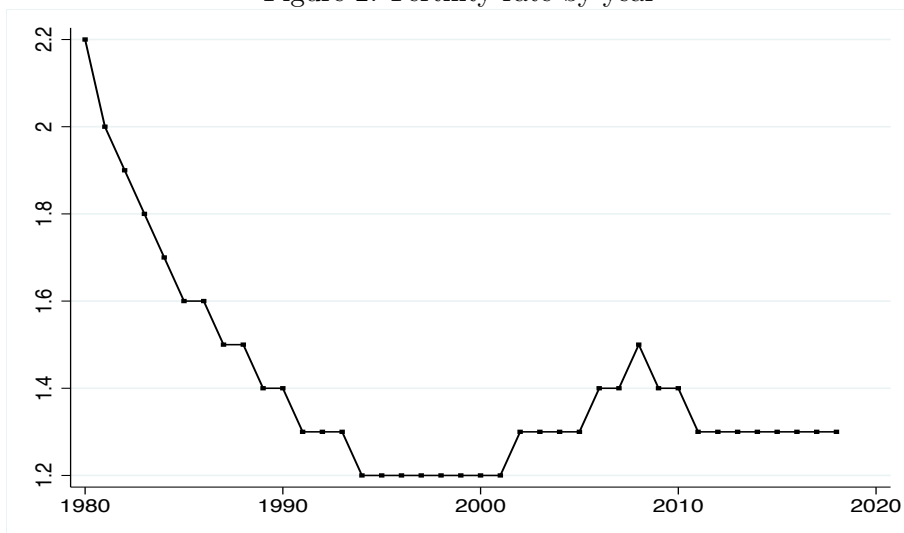
Figure 1: Labor force participation rate, by sex



Notes: Authors' own calculations based on OECD data.

Although fertility has declined across OECD countries during the last four decades, Spain has experienced the sharpest changes. The Spanish total fertility rate has declined from 2.2 children per woman in 1980 to 1.3 in 2018 (see Figure 2). Several competing forces are responsible for this demographic transformation, such as job insecurity, long periods of high and persistent unemployment, women's increasing enrollment in college-degree education, and other cultural and institutional factors (De la Rica and Iza, 2005; Adserà, 2011; Guner et al., 2019; Lopes, 2020; Bover et al. 2021).

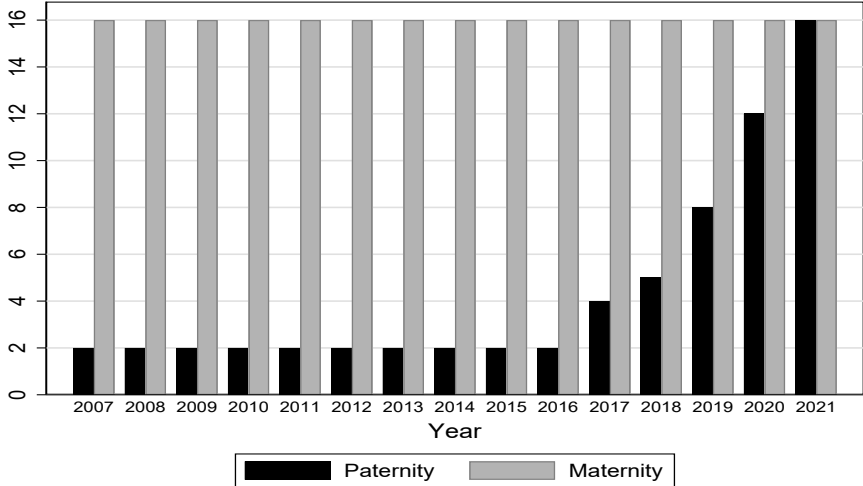
Figure 2: Fertility rate by year



Notes: Authors' own calculations based on OECD data.

Regarding family policies, the maternity leave as a family right was established in 1980. That year, mothers were entitled to six weeks of compulsory, fully compensated maternity leave, while fathers were granted two days of paid job absence. In 1989, the mother’s right was acknowledged to assign part of her maternity leave to the father. In 1999 families were granted additional ten weeks of full pay parental leave that were interchangeable between mother and father. After the paid leave period, either parent could take unpaid leave for up to 3 years, with the right to return to the same job, and reduce working hours by up to 50%, as well as the proportional pay, until the child turned 6. The right to reduce working hours was lengthened twice: first, until the child turned 8 in 2007, and then 12 in 2012. However, in practice, very few fathers took paternity leave, made use of the unpaid leave, or reduced their working hours (Fernández-Kranz and Rodríguez-Planas, 2020). This left most of the burden of childcare and housework to women, who cut back on employment outcomes (Farré and González, 2018). The paid and non-transferable paternity leave was instituted in 2007 (see Figure 3). For the first time, fathers were granted 13 days of leave at full pay, which could be taken at the same time or immediately after the maternity leave period. From then on, Spain has extended the paternity leave to four weeks in 2017, five weeks in 2018, eight weeks in 2019, twelve weeks in 2020,<sup>7</sup> and sixteen weeks in 2021, finally catching up with the duration of the maternity leave.<sup>8</sup>

Figure 3: Duration of the paid leave, in weeks



Notes: Authors’ own calculations.

<sup>7</sup>In 2020, fathers were forced to take leave the first four weeks after the childbirth, coinciding with the maternity leave, and the remaining eight weeks could be taken anytime within the first year. This enforcement was extended to six weeks in 2021.

<sup>8</sup>Although further analysis for the Spanish case is needed, Kleven et al. (2020) examine family policy reforms in Austria and show that the expansion of parental leave and child care subsidies have no impact on gender inequality. In addition, Berniell et al. (2020) explore correlations between the maximum weeks of job-protected leave available to mothers, regardless of income, and the motherhood effects on employment finding a non-monotonic relationship between the duration of parental leave and female outcomes: while motherhood effects decrease with the length of job-protected maternity leave, there is a threshold beyond which that protection is ineffective.

## 2.2 Data

We use administrative records from the Continuous Sample of Working Histories (in Spanish, *Muestra Continua de Vidas Laborales*, MCVL), a 4 percent random sample of all affiliates to the Social Security in each reference year. Information from those individuals is merged with richer data from the municipal census and the tax administration. From 2005 to 2018 the MCVL has a proper longitudinal design, following the same individuals over time as long as they keep registered to the Social Security at least for one day in the year either as active affiliate or pensioner. In addition to those individuals who were present in the previous wave, the sample is refreshed each wave with new members to ensure that the sample remains representative of the population of reference. Moreover, the MCVL includes historical labor market information dating as far back as 1967, with some earnings data being available since 1980, allowing us to construct the individuals' employment history on a monthly basis. Also, whenever a member stops working for a number of months but re-enters later, we identify that spell as a career break and assign the value zero to earnings. Only those individuals who die, leave definitively the country, or stop working completely and who never come back afterward as pensioners are no longer listed as Social Security affiliates in further MCVL waves.

The estimation sample we use covers workers registered in the Social Security system under the general regime. Information on contribution bases for the remaining schemes (mainly self-employment) has poor quality.<sup>9</sup> Besides, the exact family relationship of the employees to the individuals with whom they live is not made explicit in the dataset, thus implying that some assumptions are required to identify their children. In this respect, we infer that a worker's first child has been born when we observe an individual of age 0 to 1 living together with an adult worker, as long as the adult individual is between 18 and 45 years old at the birth moment<sup>10</sup>, and no other child is present in the same household at that time.

Following Kleven, Landais and Sogaard (2019), we track the same workers from up to five years before to up to ten years after the birth of their first child. In our setup, a balanced panel like this implies that individuals remain listed in the Social Security system for the whole period.<sup>11</sup> In contrast, "unbalanced" encompasses all individuals affiliated at any point in time with no

---

<sup>9</sup>In Spain, more than 80 percent of workers are enrolled in the general scheme of the social security system. There are alternative schemes for self-employed, workers in fishing, mining and agricultural activities, and domestic staff. For instance, as self-employed individuals choose how much to contribute themselves, García-Miralles et al. (2019) argue that income for self-employed can be poorly approximated using administrative data on tax returns. While this is a potential limitation of our analysis, we believe it may not have a big impact in practice. First, there are very few self-employed women (around 8% in our sample). Second, we do not observe a big change in the probability of being self-employed after childbirth.

<sup>10</sup>We impose this age range to capture the parent-child relationship.

<sup>11</sup>This does not imply that they appear as working employees for the whole period. They could have been not employed in between, even for long periods of time, as long as they have returned to work sometime after. They will be excluded from the balanced panel only in case of leaving the country, death, or having definitively left the labor market within those 15 years.

specific duration. Although the balanced sample ensures comparability across individuals over time, given that we will track each individual’s labor market history for at least 15 years, this restriction also imposes some selection in terms of using information from individuals that managed to remain attached to the Spanish labor market for a long period of time.

Additionally to demographic characteristics of the individuals, the labor market side is well represented in the data with income records from two different sources –monthly contribution bases and taxable income information–, job-specific variables, and the number of days worked per year.<sup>12</sup> Regarding the measurement of labor earnings, our preferred option is to use monthly contribution bases, for which comprehensive historical data is available since the late 1990s. Earnings from contribution bases are however top-coded due to regulatory constraints.<sup>13</sup> An alternative approach would be to use annual, unbounded labor income from tax records, yet the data starts in 2005. Figure A1 in the Appendix shows average earnings profiles over time, comparing the different possible samples and income sources.<sup>14</sup> The main takeaways from this figure are: (i) for women, we observe a decrease in earnings after the birth of the first child, a feature not seen in men (ii) differences in earnings profiles between balanced and unbalanced samples are more pronounced starting in 2005 than in 1990 because of the huge impact that the Great Recession had on employment,<sup>15</sup> and (iii) the incidence of censorship for women is very small (note that the gray and brown lines overlap).

Our estimation sample covers 543,828 employees (264,391 mothers and 279,437 fathers) and almost 95 million monthly observations from 1990 to 2018. Table 1 shows the summary statistics. First, average monthly wages are higher for men than for women (1,893 vs. 1,281 euros, respectively), and for college-educated in relation to non-college-educated individuals. In terms of days worked in a month, men spend on average five days more at work than women; within the latter, college-educated women work substantially more days than non-college women. Also, part-time work occurs more frequently for women (4 percent for men vs. 23 percent for women), a feature also observed for fixed-term contracts though to a lesser extent. Finally, women are more likely than men to hold college education (63 percent vs. 53 percent, respectively).

---

<sup>12</sup>The MCVL does not include information on hours worked.

<sup>13</sup>There is a legal upper bound on monthly contributions which, for the case of high-earners, makes a fraction of income unobservable.

<sup>14</sup>Specifically, the figure shows results for unbalanced (“U.” lines) or balanced samples (“B.” lines); and for using contribution bases (“bases” lines) or uncapped taxable income (“tax-in.” lines) as income measures. For the contribution bases we show results for samples starting in years 1990 and 2005.

<sup>15</sup>In any case, we repeated our estimation in an unbalanced sample obtaining robust estimates for the long run child penalty (see Figure A2 in the Appendix).



Table 1: Summary statistics

	All		Men		Men college		Men non-college		Women		Women college		Women non-college	
	Mean	SD	Mean	SD	Mean	SD	Mean	SD	Mean	SD	Mean	SD	Mean	SD
Age	34.2	6.54	34.9	6.61	35.6	6.39	34.2	6.78	33.5	6.40	34.1	6.14	32.6	6.72
Monthly wages	1576	1197	1893	1142	2260	1210	1486	901	1281	1171	1593	1251	750	768
Days worked per month	22.3	12.9	24.9	10.9	26.1	9.82	23.6	11.9	19.9	14.0	22.3	12.9	15.6	14.8
Part-time (1=yes)	0.13	0.34	0.04	0.20	0.05	0.21	0.04	0.20	0.23	0.42	0.21	0.41	0.26	0.44
Fixed-term (1=yes)	0.30	0.46	0.28	0.45	0.22	0.41	0.35	0.48	0.32	0.47	0.30	0.46	0.36	0.48
College (1=yes)	0.58	0.49	0.53	0.50					0.63	0.48				

Notes: Statistics over the full period (1990-2018). SD: standard deviation. Monthly wages in Euros of 2018.

### 2.3 Empirical design

We follow the event study specification proposed by Kleven, Landais and Sogaard (2019). This setup is based on comparing mothers' labor market outcomes relative to fathers' around the event of the first childbirth. The baseline specification stems from a balanced panel in which we observe each parent from five years before to ten years after their first child is born. Therefore, the event time  $t$  is indexed in relation to the year of the first childbirth, in a way such that  $t = 0$  for the first year after the birthdate, with  $t$  ranging from -5 to +10.<sup>16</sup>

In particular, we run the following regression separately for men and women:

$$Y_{ist}^g = \sum_j \alpha_j^g I(j = age_{is}) + \sum_k \beta_k^g I(k = s) + \sum_{l \neq -1} \delta_l^g I(l = t) + \varepsilon_{it}^g \quad (1)$$

where  $Y_{ist}^g$  represents the outcome of interest for individual  $i$  of gender  $g$  at calendar time  $s$  at event time  $t$ . Each individual  $i$  contributes with one observation per year  $t$ , referenced to the month of birth. The right-hand side of the specification includes age, calendar time (year  $\times$  month) interactions, and event time binary variables. We exclude the event time dummy corresponding to  $t = -1$ , so that the event time coefficients capture the impact of parenthood relative to the year preceding the first childbirth. Moreover, the inclusion of age dummies controls non-parametrically for latent life-cycle trends and, similarly, the year and month dummies control for business cycle effects.<sup>17</sup>

Our main outcome  $Y_{ist}^g$  is gross annual earnings. We construct this variable using monthly observations in the following way: for each individual, we take as a reference the year and month of birth of the first child; for each year until/since that point, we take the contribution base for the reference month and add the preceding 11 monthly bases. Besides, we have also

<sup>16</sup>Similarly, we extend our analysis to further capture very long-run effects by using observations up to 15 years after the first birth event.

<sup>17</sup>Unlike Kleven, Landais and Sogaard (2019), we are able to pin down the month of birth of the first child.

considered two other measures yielding similar estimation results; however, the chosen baseline minimizes the observed differences in earnings between men and women before childbirth.<sup>18</sup>

The effects on earnings might arise from changes in the extensive margin (number of days worked), the intensive margin (number of hours worked per day), or from changes in the wage rate. Given that our data do not contain information on hours worked, we cannot estimate effects on the wage rate. However, we can gauge the relative changes in the extensive and intensive margins, by considering as alternative outcomes “number of days worked per year”, “part-time job”, and “fixed-term job”. Finally, for each of these outcomes, we perform a heterogeneity analysis by running the estimating equation separately for college-educated and non-college-educated workers.

In a second step, the estimated level effects are converted into percentage figures, calculated as

$$P_t^g = \hat{\delta}_t^g / E[\tilde{Y}_{ist}^g | t], \quad (2)$$

where  $\tilde{Y}_{ist}^g$  is the predicted labor income net of the event time dummies, that is, the counterfactual in the hypothetical case of not having children:

$$\tilde{Y}_{ist}^g = \sum_j \hat{\alpha}_j^g I\{j = age_{is}\} + \sum_k \hat{\beta}_k^g I\{k = s\},$$

and  $E[\tilde{Y}_{ist}^g | t]$  is the mean of the predicted values at time event  $t$ .

Once the children effect has been estimated separately for men and women, we measure child penalty as the percentage by which women fall behind men due to children at event time  $t$ :

$$P_t = \frac{\hat{\delta}_t^{men} - \hat{\delta}_t^{women}}{E[\tilde{Y}_{ist}^{women} | t]} \quad (3)$$

As in Kleven, Landais and Sogaard (2019), there are two steps in the estimation of the child penalty: first, estimating the effect of the first child separately for men and women, and then estimating the child penalty. The former requires a stronger identification assumption: that mothers (fathers) having first child in year  $t$  would have followed the same trends as mothers (fathers) having first child in another year had neither of them had children. Hence, the separate earnings dynamics for mothers and fathers should be interpreted with caution. The second step

---

<sup>18</sup>Firstly, for each individual and year from / to the birth of the child we add the 12 monthly observations in that year (event year measure). Second, for each individual and natural year we add the 12 corresponding monthly observations and then compute the average over the time event variable (natural year measure).

(the child penalty), by contrast, relies on the milder smoothness assumption of event studies. This assumption is validated with tests of parallel trends before childbirth, i.e., the wage (or other outcome) trajectories of men and women being parallel for  $t < 0$ . Even under parallel trends, two remarks are in order: first, this approach requires no anticipation, as women who anticipate that next-year’s earnings will decline might decide (to try) to become pregnant; second, the smoothness around the date of birth may be less informative as we consider periods further away from the event.<sup>19</sup> Finally, it is important to note that our results for part time, and fixed-term-contract results are conditional on working and thus include any selection effects into employment. If, as traditional selection models would predict, workers are positively selected on wage rates, then our estimates of the penalty for those two outcomes will be biased downwards (see Kleven, Landais and Sogaard, 2019; Costa-Dias et al. 2020).

### 3 Results

#### 3.1 Impacts of first child

Graph (a) in Figure 4 presents the gross annual earnings trajectory for men and women throughout a 15-year window around the birth of their first child. For that purpose, we plot the gender-specific estimates of total earnings before taxes and transfers, previously defined as  $P_t^g$ , across event time. These outcome estimates at event time  $t$  are expressed relative to the year before the first childbirth, i.e., event time  $t - 1$ . Given that, like Kleven, Landais and Sogaard (2019), we focus on the first child, these estimates also include the penalties to subsequent births.

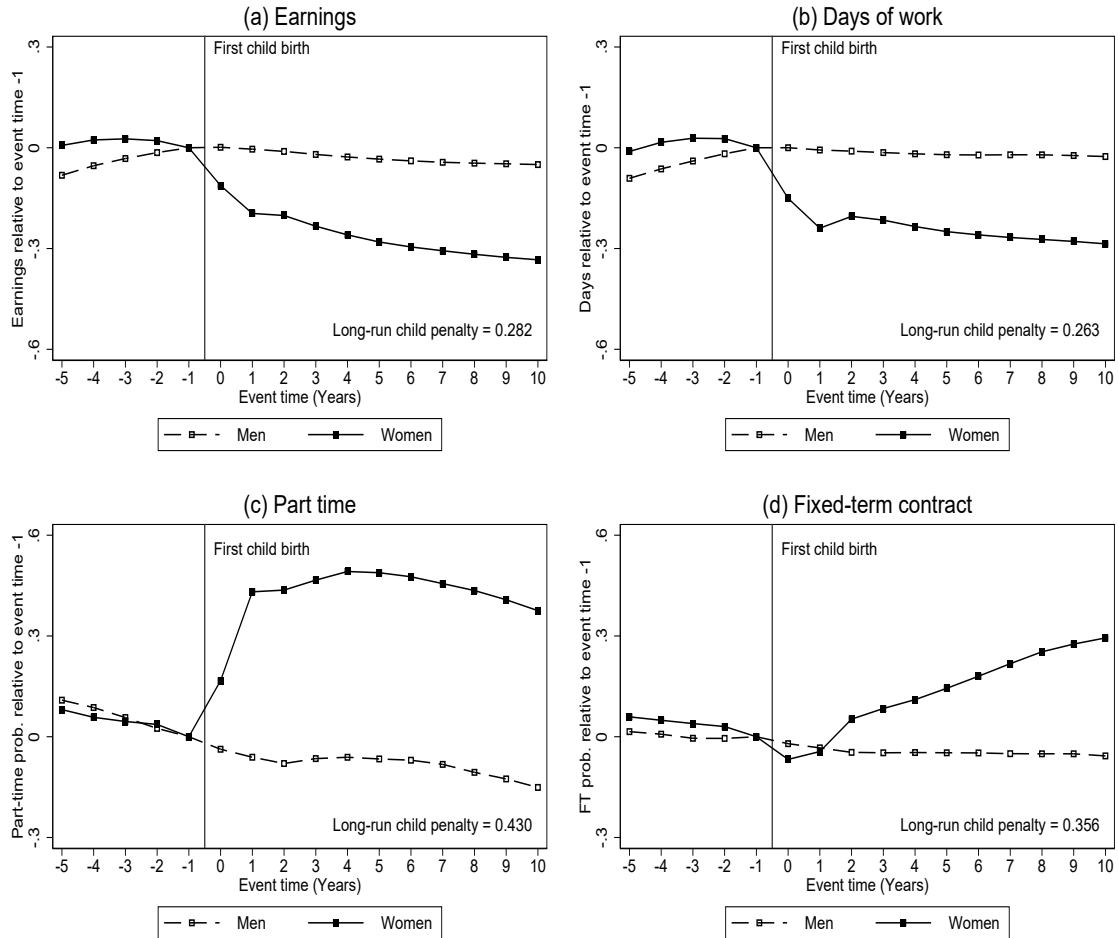
As can be seen in the graph, in the year following the birth of the first child, mothers face a loss in gross earnings of 11.2 percent with respect to their pre-birth rate, while fathers’ earnings increase by 0.15 percent. During the following year, women’s earnings continue declining to 19.5 percent. This diverging trend in earnings for male and female workers continues even ten years after the first childbirth, so that throughout the years, women’s earnings never return to levels prior to maternity. In fact, ten years after the birth of a first child, female earnings stabilize at around 33 percent lower, whereas male earnings drop by 5 percent. Hence, our estimate of the long-run child penalty is 28 percentage points. These estimates resulting from the baseline specification confirm a significant and persistent negative effect for mothers in a ten-year bracket;

---

<sup>19</sup>The effects on labor market outcomes can also be determined by decisions anticipating fertility. For instance, women with a strong preference for children may invest less in education or work experience in anticipation of motherhood, which would lead to lower earnings. Our estimation approach does not capture such *ex ante* effects, but their relevance depends on how far earlier the labor market outcomes are measured with respect to the childbirth (Alba et al. 2009). Moreover, Adda et al. (2017) argue that occupational choices due to anticipated fertility represent a very small fraction of the total earnings loss from children.

moreover, the divergence remains when extending the analysis to 15 years ahead (see Figure A3 in the Appendix).<sup>20</sup>

Figure 4: Impacts of first child



Notes: The figure shows event time coefficients estimated from equation (2), absent children for men and women separately and for different outcomes. Each graph also reports a long-run child penalty—the percentage by which women are falling behind men due to children, calculated from equation (3) at event time  $t = 10$ . All of these statistics are estimated on a balanced sample of parents who have their first child between 1994 and 2009 and who are observed in the data during the entire period between five years before and ten years after child birth. The effects on earnings and days of work are estimated unconditional on employment status, while the effects on part time and fixed-term contract are estimated conditional on working.

Next, we study some possible mechanisms underlying this gender gap. Graph (b) in Figure 4 shows that, even when men and women are on similar trends in terms of their number of days worked in a year prior to becoming parents, women’s days worked fall significantly after

<sup>20</sup>Estimates of the child penalty in the year following the child birth using the alternative definition of annual earnings are 15.2 and 12.5 for the event year and the natural year measures, respectively, relative to the 11.4 in the baseline specification; whereas the estimates in the long run are 26.7 and 26.1, respectively, relative to the 28.2 in the baseline.

childbirth, albeit men’s do not change. In particular, our estimates reveal that, 10 years after childbirth, women reduce the number of days worked by 26 percent, while the change for men is negligible. Moreover, graph (c) also shows large gender differences in the probability of working part-time. While men’s part-time probability decreases after parenthood, such probability increases considerably for women (indeed, the relative gap equals 43 percent after 10 years). Finally, graph (d) shows that women become more likely (29 percent) to work under a fixed-term contract after childbirth, while men’s probability becomes 6 percent lower.<sup>21</sup>

Alternatively, we consider two additional mechanisms complementing our sample with information coming from a special module of the Spanish labor force survey in 2010. First, we merge both datasets using the economic activity of the firm (by means of the National Classification of Activities 2009 at two digits). Next, we define (i) long-hours sectors as those above the median in the proportion of workers working 40 (or, alternatively, 50) hours per week; and (ii) flexible sectors as those above the median in the proportion of workers who can adjust working time or can take days off due to family reasons. We measure the impact of the first child on the likelihood of working in such sectors (see Figure A4 in the Appendix). We find, first, that women’s probability to work in long-hours sectors declines in the very first year after childbirth and reaches pre-birth values approximately six to ten years after. On the contrary, men show a continuous upward trend throughout the years, so that men’s probability to work in long-hours sectors is always above that of women.<sup>22</sup> Second, we estimate a higher probability for women to work in sectors allowing for flexible working hours or taking days off due to family reasons, while men’s probability barely changes. In both cases, the relative gap narrows rapidly and, for sectors granting days off due to family reasons, even disappears after three years.<sup>23</sup>

### 3.2 Impacts of first child by education

As noted by Kleven, Landais, and Sjøgaard (2018), if there is heterogeneity in child penalties by education, this might be suggestive that a comparative advantage channel is driving (part of) the child penalty. To check whether women at the top of the education distribution incur the

---

<sup>21</sup>Collischon et al. (2020) study the impact of a German subsidy program (“Minijobs”) that allows women to reduce their working hours after childbirth. They find that the child penalty in earnings for women entering in “Minijobs” after birth was larger and more persistent eight years after compared to mothers who directly return to regular employment.

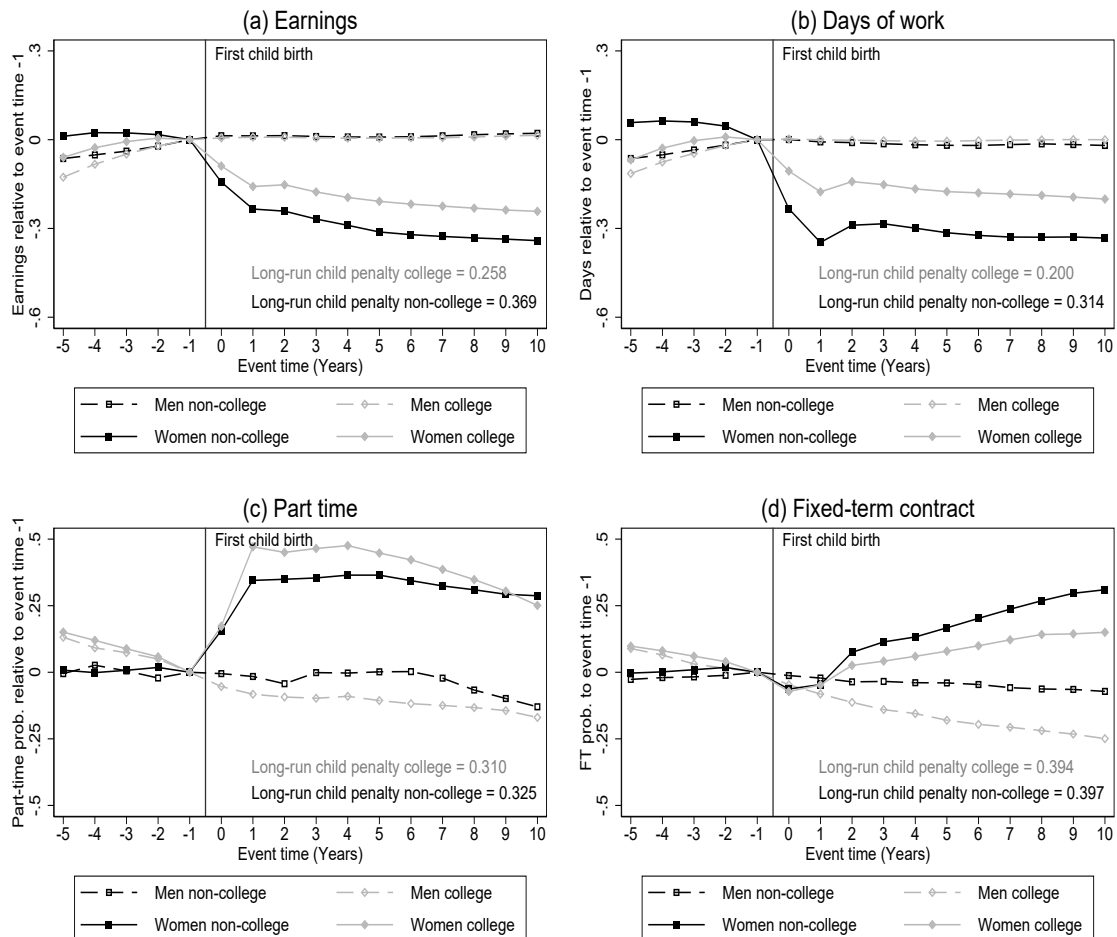
<sup>22</sup>The relative gender gap equals 0.11 (0.10) after 10 years in sectors with a proportion of workers working 50 (40) hours per week above the median

<sup>23</sup>In this vein, Bütikofer et al. (2018) exploit Norwegian administrative data to estimate the earnings penalty due to parenthood among different high-earnings careers. They find that women in occupations with nonlinear wage structures such as MBA and lawyers suffer from a larger and more persistent child earnings penalty in contrast to women in occupations characterized by more linear wage structures such as STEM occupations. In our data, however, the long-run child penalty for those who were working in long-hours sectors at time event -1 is lower than the child penalty estimated for the whole sample (12.5 versus 28.2). Indeed, among those who always remain in long-hours sectors after the child birth, the long-run child penalty is 2.6 percent.

same penalty as women at the bottom, in Figure 5 we perform the same analysis as in Figure 4, but we condition on the educational level. We define education as the the maximum level reached pre-birth so that education cannot be a bad control (i.e., an outcome).

Graphs (a) and (b) show that the drops in earnings and days of work are significantly larger for non-college-educated than for college-educated women.<sup>24</sup> Graph (c) reveals that right after the birth the increase in women’s part-time work, by contrast, is larger for college than for non-college women (although the impacts tend to converge over time). Finally, the increase in fixed-term contracts is larger for non-college-educated women than for college-educated women. In this case, however, we also see some differences for men, with college-educated men also becoming significantly less likely to work on a fixed-term job over time once they become parents, while for non-college men that probability barely changes.

Figure 5: Impacts of first child, by education



Notes: Same data and estimating equation as in Figure 4, conditioning on the educational level.

<sup>24</sup>Repeating the exercise in the unbalanced sample for college graduates starting in 2005 and using the uncapped taxable income as earnings measure, yield very similar results (a long run child penalty of 24 percent instead of 25 percent), implying that the lower impact for this group is not due to the censoring of contribution bases (see Figure A5 in the Appendix).

Our results in this respect are not completely aligned with those in Kleven, Landais, and Sogaard (2018), who show that there is essentially no heterogeneity in child penalties with respect to the relative education levels of the parents. The heterogeneity patterns we uncover for the Spanish case could be due to the comparative advantage channel, as proposed by the literature.<sup>25</sup>

### 3.3 Comparison to other countries

Table 2 compares the long-run penalties in Spain with those found in other countries. For comparability purposes, the Spanish estimate has been recalculated as the average for event times five to ten (note that the penalty at  $t = 10$  equals 28.2). The table also compares age at first birth and total number of children. The magnitude of the Spanish child penalty lies between those found for some Nordic countries –higher than Denmark and Finland, which present the lowest rates, though lower than Sweden- and the estimate for the United States. On the contrary, the German-speaking countries (Germany, Austria) feature the highest motherhood penalties, with the UK below. Although Spain has not achieved the degree of gender equality that characterizes Nordic countries,<sup>26</sup> Spain’s values have converged in recent years.<sup>27</sup> Nevertheless, Spain has the highest parent’s age at the first childbirth event and the lowest number of children among the countries considered in the comparison.

---

<sup>25</sup>Alba and Álvarez (2004) conclude that college-educated women show greater attachment to the labor market than non-college-educated women. Moreover, women who were more frequently unemployed before the childbirth face higher volatility in the labor market after becoming mothers than those who were employed, which enjoy greater job stability after motherhood.

<sup>26</sup>Nordic countries were some of the earliest to adopt effective social policies in terms of gender equality. Thus, they have one of the most gender-equal labor markets in the OECD, along with small gender gaps in labor market participation, employment, and working hours.

<sup>27</sup>For example, we have considered question R3 (“Do you think that women should work full-time, part-time, or not at all under certain circumstances...?”) from the ISSP (International Social Survey Programme) 2012 dataset and built an indicator of the share of people who answer *Stay at home*. This indicator takes values of 5.2% in Denmark, 10.5% in Sweden, 24.4% in Spain, 27.9% in the United States, 33.7% in the United Kingdom, 49.3% in Austria but 19.7% in Germany. If we plot this indicator against the long-run penalties in earnings we obtain that the higher the share of those for whom women should stay at home, the higher the penalty. However, this correlation is obtained from just seven observations, hence it would be at most suggestive.

Table 2: Comparison of country statistics and estimates

	Year of first birth		Age at first birth		No. children (at $t = 10$ )	Long-run child penalty
	Range	Mean	Men	Women	Mean	
Denmark	1985-2003	1994	28.5	26.2	2.2	21
Finland	1992-2007		29.8	27.6		25
Sweden	1997-2011	2004	30.8	28.7	2.2	26
<b>Spain</b>	<b>1994-2009</b>	<b>2002</b>	<b>32.4</b>	<b>31.0</b>	<b>1.4</b>	<b>25</b>
United States	1967-2006	1985	25.8	24.9	2.1	31
United Kingdom	1991-2008	1998	31.3	30.0	2.0	44
Austria	1985-2007	1995	30.0	26.5	1.7	51
Germany	1989-2005	1997	30.4	27.7	1.9	61

Notes: The long-run child penalty in this table is defined as the average penalty from event time five to ten. Statistics for countries other than Spain are from Kleven, Landais, Posch, Steinhauer, and Zweimüller (2019); Sieppi and Pehkonen (2019).

## 4 Concluding remarks

Motherhood explains a significant proportion of the gender gap in earnings. Using longitudinal data from the Social Security records, we follow the event study methodology proposed by Kleven, Landais, and Søgaaard (2019) to estimate the child penalty in Spain. We explore the profiles over time of different labor market outcomes for men and women. In general, there are no remarkable differences until the first childbirth but women diverge considerably from that moment on. Our findings suggest that the child penalty in earnings is 11.4 percent in the year after the first child is born and continues widening to 28 percent in the long run. Overall, the magnitude of the Spanish child penalty is between those found for Nordic countries and Anglo-saxon countries.

Moreover, we document a variety channels through which mothers present a lower earnings profile. For instance, women reduce considerably their working time after their first childbirth, with a 15 percent child penalty in the number of days worked in the first year and 26 percent 10 years after. In terms of alternative work arrangements, the probability of women working part-time rises by 38 percent one year after their first child, while for men that probability decreases by 15 percent. Besides, women become increasingly more likely to work under a fixed-term contract while for men that probability decreases by 6 percent. We also find that reductions in earnings and days worked after the first childbirth are substantially larger for women with no college degree. In contrast, college-graduated mothers appear more prone to remain employed but working part-time.



## References

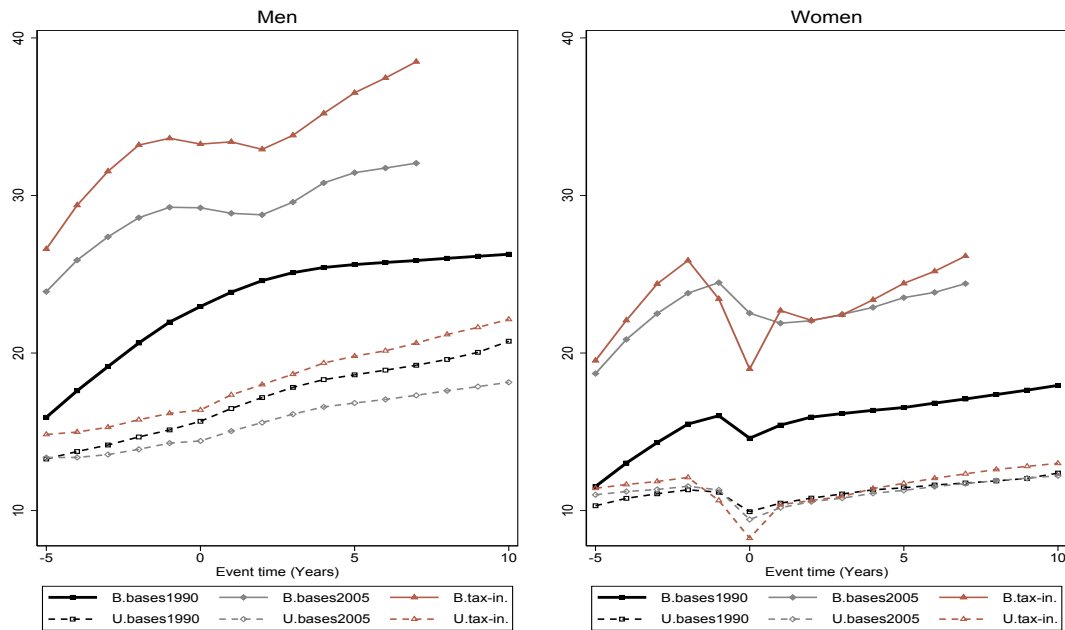
- [1] Adda, Jerome, Christian Dustmann, and Katrien Stevens. 2017. “The career costs of children”. *Journal of Political Economy*, 125(2): 293-337.
- [2] Adserà, Alícia. 2011. “Where are the babies? Labor market conditions and fertility in Europe”. *European Journal of Population*, 27(1): 1-32.
- [3] Alba, Alfonso, and Gema Álvarez. 2004. “La actividad laboral de la mujer en el entorno del nacimiento de un hijo”. *Investigaciones económicas*, 28(3): 429-460.
- [4] Alba, Alfonso, Gema Álvarez, and Raquel Carrasco. 2009. “On the estimation of the effect of labour participation on fertility”. *Spanish Economic Review*, 11(1): 1-22.
- [5] Andresen, Martin Eckhoff, and Emily Nix. 2019. “What causes the child penalty and how can it be reduced? Evidence from same-sex couples and policy reforms”. Discussion Papers 902, Statistics Norway, Research Department.
- [6] Angelov, Nikolay, Per Johansson, and Erica Lindahl. 2016. “Parenthood and the gender gap in pay”. *Journal of Labor Economics*, 34(3): 545-579.
- [7] Berniell, Inés, Lucila Berniell, Dolores de la Mata, María Edo, and Mariana Marchionni. 2018. “Motherhood and the missing women in the labor market”. Working Papers 2018/13, Corporación Andina de Fomento.
- [8] Berniell, Inés, Lucila Berniell, Dolores de la Mata, María Edo, Yarine Fawaz, Matilde P. Machado, and Mariana Marchionni. 2020. “Motherhood, Labor Market Trajectories, and the Allocation of Talent: Harmonized Evidence on 29 Countries”. Documentos de Trabajo del CEDLAS N<sup>o</sup> 270, Noviembre, 2020, CEDLAS-Universidad Nacional de La Plata.
- [9] Bertrand, Marianne. 2011. “New Perspectives on Gender”. *Handbook of Labor Economics*, 4b., ed. O. Ashenfelter and D. Card, Chapter 17, 1543-1590. North Holland: Elsevier Science Publishers.
- [10] Bertrand, Marianne. 2013. “Career, family, and the well-being of college-educated women”. *American Economic Review*, 103(3): 244-50.
- [11] Blau, Francine, and Lawrence Kahn. 2017. “The Gender Wage Gap: Extent, Trends, and Explanations”. *Journal of Economic Literature*, 55(3): 789-865.
- [12] Bover, Olympia, Nezih Guner, Yuliya Kulikova, Alessandro Ruggieri and Carlos Sanz. 2021. “Family-Friendly Policies and Fertility: What Firms Got to Do With It?”, mimeo.

- [13] Buser, Thomas, Muriel Niederle, and Hessel Oosterbeek. 2014. “Gender, competitiveness, and career choices”. *The Quarterly Journal of Economics*, 129(3): 1409–1447.
- [14] Bütikofer, Aline, Sissel Jensen, and Kjell G. Salvanes. 2018. “The role of parenthood on the gender gap among top earners”. *European Economic Review*, 109(C): 103-123.
- [15] Collischon, Matthias, Kamila Cygan-Rehm, and Regina T. Riphahn. 2020. “Long-run effects of wage subsidies on maternal labor market outcomes”, mimeo.
- [16] Costa-Dias, Monica, Robert Joyce, and Francesca Parodi. 2020. “The gender pay gap in the UK: children and experience in work”. *Oxford Review of Economic Policy*, 136(4): 855-881.
- [17] De la Rica, Sara, and Amaia Iza. 2005. “Career Planning in Spain: Do Fixed-Term Contracts Delay Marriage and Parenthood?”. *Review of the Economics of the Household*, 3(1): 49-73.
- [18] Farré, Lúdia and Libertad González. 2018. “Does paternity leave reduce fertility?”. *Journal of Public Economics*, 172(C): 52-66.
- [19] Fernandez-Kranz, Daniel, Aitor Lacuesta, and Nuria Rodriguez-Planas. 2013. “The Motherhood Earnings Dip: Evidence from Administrative Records”. *Journal of Human Resources*, 48: 169-197.
- [20] Fernandez-Kranz, and Nuria Rodriguez-Planas. 2020. “Too family friendly? The consequences of parents’ right to request part-time work”. *Journal of Public Economics*, 197(2): 104-407.
- [21] García-Miralles, Esteban, Nezh Guner, and Roberto Ramos. 2019. “The Spanish personal income tax: facts and parametric estimates”. *SERIEs*, 10: 439-477.
- [22] Goldin, Claudia and Cecilia Rouse. 2000. “Orchestrating impartiality: The impact of blind auditions on female musicians”. *American Economic Review*, 90(4): 715-741.
- [23] Guner, Nezh, Ezgi Kaya, and Virginia Sánchez-Marcos. 2019. “Labor Market Frictions and Lowest Low Fertility”. CEPR Discussion Papers 14139
- [24] Kleven, Henrik, Camille Landais, and Jakob Egholt Søgaard. 2019. “Children and Gender Inequality: Evidence from Denmark”. *American Economic Journal: Applied Economics*, 11(4): 181-209.
- [25] Kleven, Henrik, Camille Landais, Johanna Posch, Andreas Steinhauer, and Josef Zweimüller. 2019. “Child Penalties across Countries: Evidence and Explanations”. *AEA Papers and Proceedings*, 109: 122-126.

- [26] Kleven, Henrik, Camille Landais, and Jakob Egholt Sogaard. 2020. “Does Biology Drive Child Penalties? Evidence from Biological and Adoptive Families”. *American Economic Review: Insights*, forthcoming.
- [27] Kleven, Henrik, Camille Landais, Johanna Posch, Andreas Steinhauer, and Josef Zweimüller. 2020. “Do Family Policies Reduce Gender Inequality? Evidence from 60 Years of Policy Experimentation”. NBER Working Paper w28082
- [28] Lopes, Marta. 2020. “Job Security and Fertility Decisions”. mimeo.
- [29] Lundborg, Petter, Erik Plug, and Astrid Würtz Rasmussen. 2017. “Can women have children and a career? IV evidence from IVF treatments”. *American Economic Review*, 107.6: 1611-37.
- [30] Olivetti, Claudia, and Barbara Petrongolo. 2016. “The Evolution of the Gender Gap in Industrialized Countries”. *Annual Review of Economics*, 8: 405-434.
- [31] Pora, Pierre, and Lionel Wilner. 2019. “Child Penalties and Financial Incentives: Exploiting Variation along the Wage distribution”. Working Papers 2019-17, Center for Research in Economics and Statistics.
- [32] Querejeta, Martina. 2020. “Impacto de la maternidad sobre el ingreso laboral en Uruguay”. *Serie Estudios y Perspectivas*, 47, CEPAL.
- [33] Sieppi, Antti, and Jaakko Pehkonen. 2019. “Parenthood and Gender Inequality: Population-based Evidence on the Child Penalty in Finland”. *Economics Letters*, 182(C): 5-9.

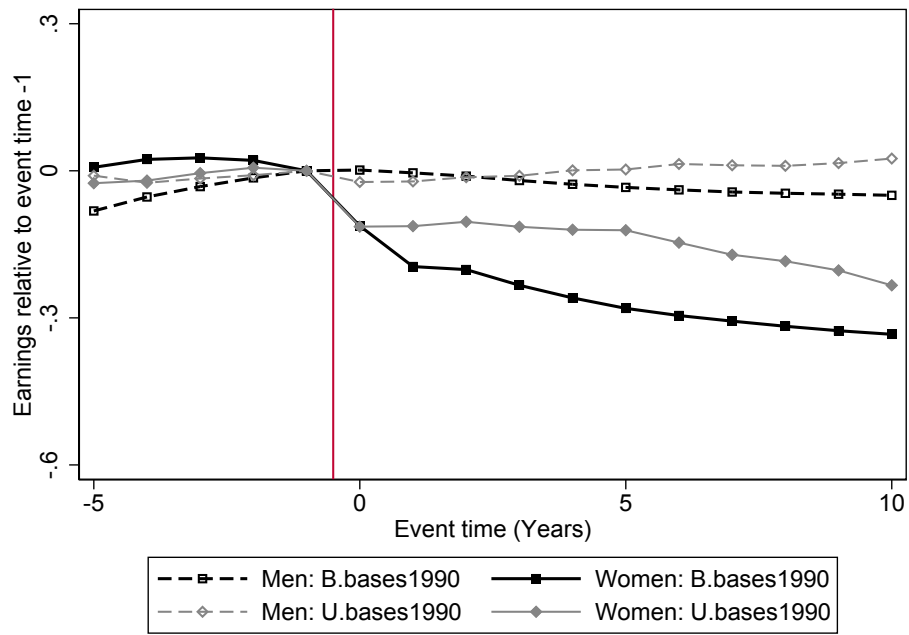
# Appendix

Figure A1: Earnings profiles



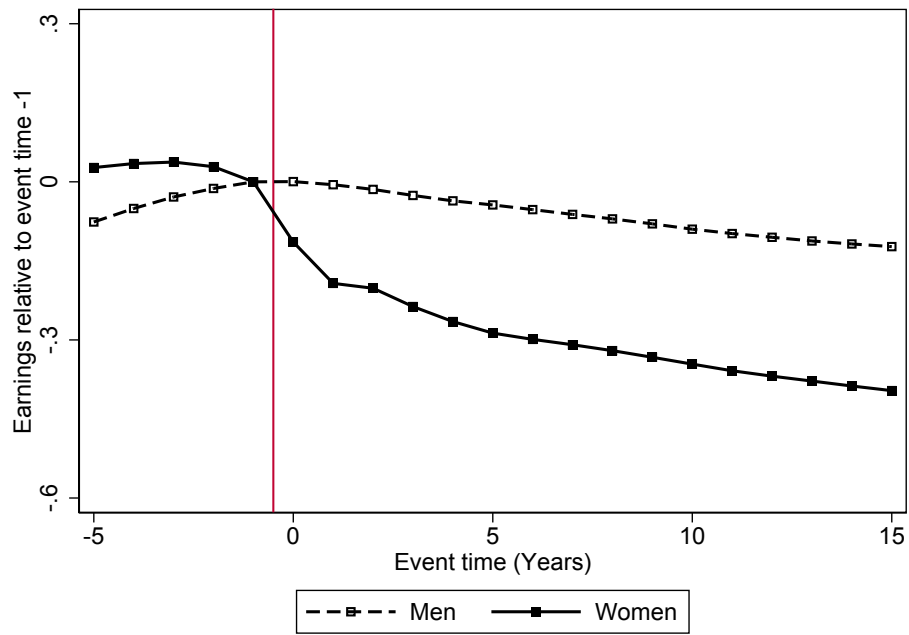
Notes: the figure represents averages of annual earnings (in 2018 thousand euros), calculated separately for men (on the left) and women (on the right). Each sample consists of individuals having their first child at event time  $t = 0$ . Solid lines represent averages obtained from balanced panels (B) starting in 1990 (black) or in 2005 (gray for contribution bases and brown for uncapped taxable income). Dashed lines represent averages obtained from unbalanced panels (U) starting in 1990 (black) or in 2005 (gray for contribution bases and brown for uncapped taxable income).

Figure A2: Impact of the first child on earnings, balanced vs. unbalanced samples



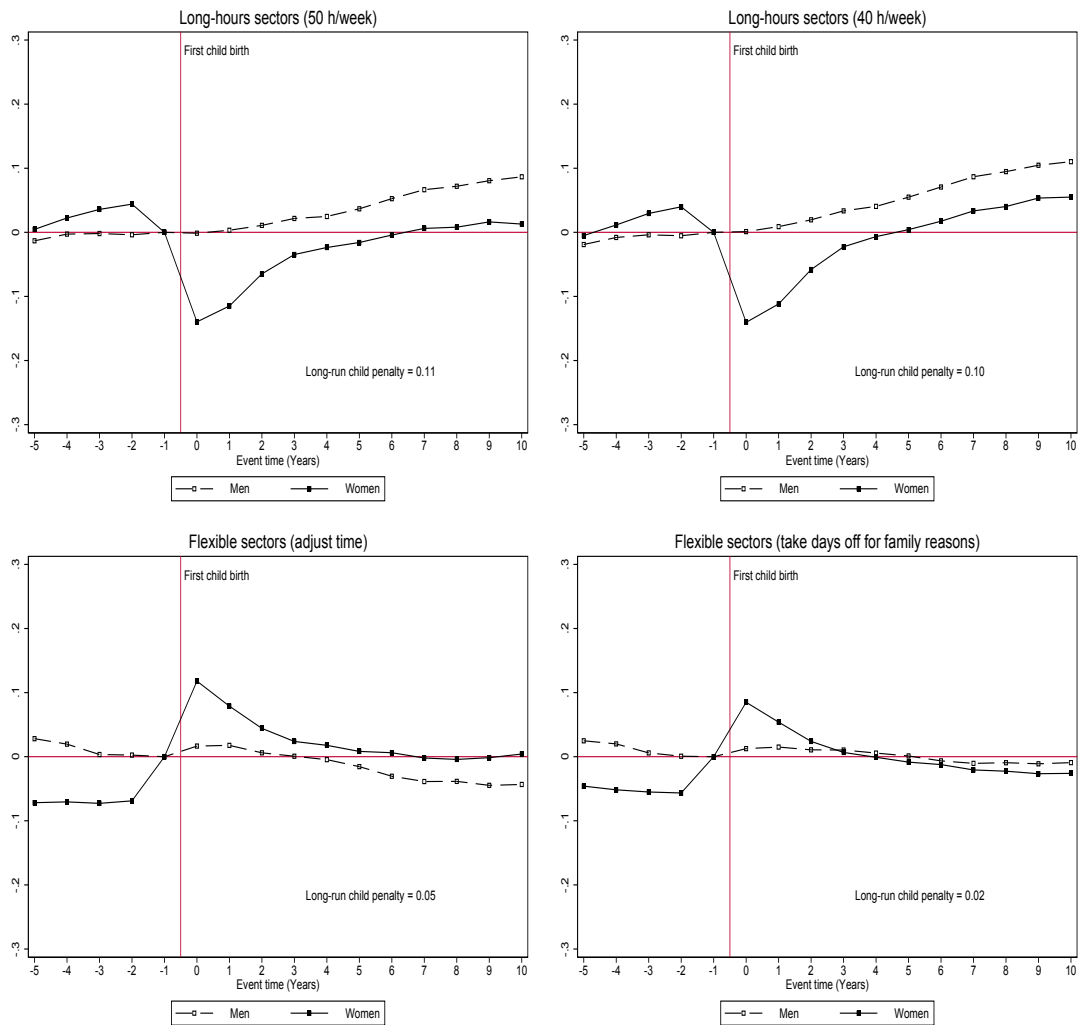
Notes: Same estimating equation as in graph (a) of Figure 4 but in both a balanced and an unbalanced panel of 15 years.

Figure A3: Impact of the first child on earnings, 15 years ahead



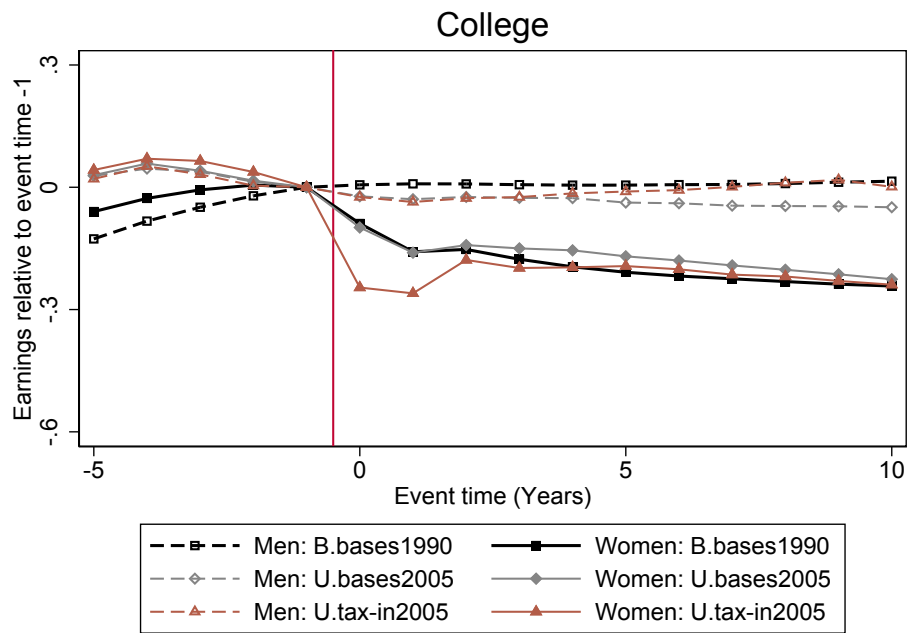
Notes: Same estimating equation as in graph (a) of Figure 4 but in a balanced panel of 20 years. The child penalty calculated from equation (3) at event time  $t = 15$  is 0.275.

Figure A4: Impact of the first child on working in long hours and flexible sectors



Notes: The effects are estimated as the probability of working in long hours and flexible sectors conditional on being working. Long hours sectors refer to those above the median in the share of workers working more than 40 (or 50) hours per week. Flexible sectors refer to those above the median in the share of workers that are allowed to adjust working time or take leave due to family reasons.

Figure A5: Impact of the first child on earnings, college



Notes: Same estimating equation as in graph (a) of Figure 4 but in the unbalanced sample for college graduates starting in 2005 and using the uncapped taxable income as earnings measure.